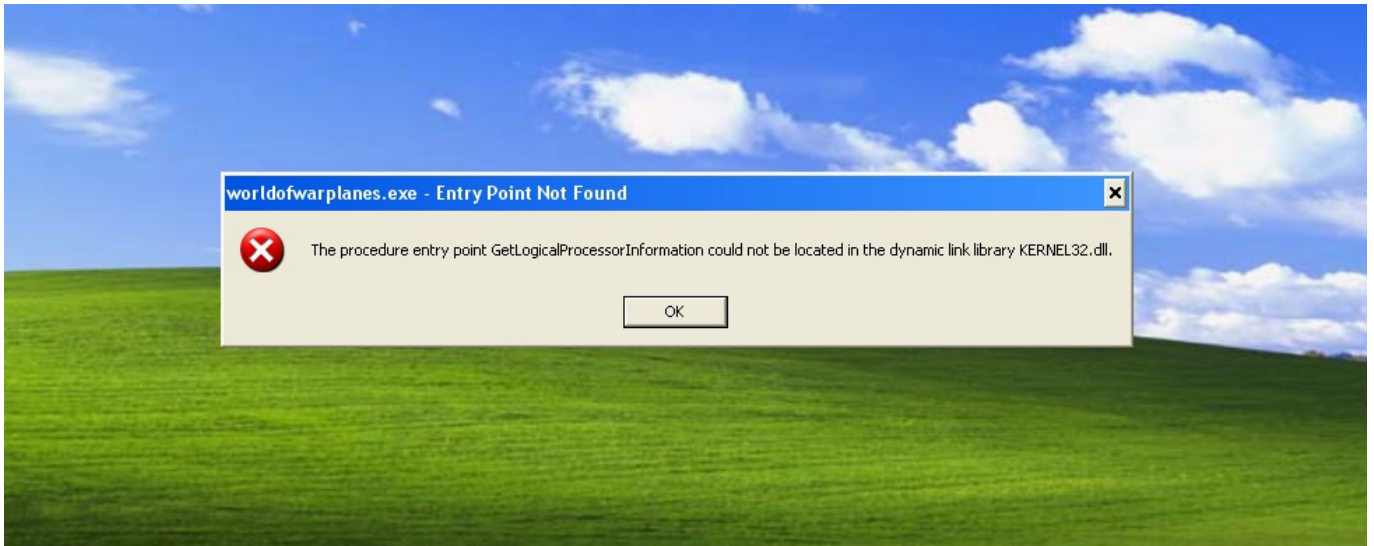




[Could Not Be Located In Dynamic Link Library Kernel32.dll](#)



[Could Not Be Located In Dynamic Link Library Kernel32.dll](#)



The procedure entry point SetDefaultDllDirectories could not be located in the dynamic link library KERNEL32.dll #9813. Closed. joshxyzhimself opened this The procedure entry point AddDllDirectory could not be located in the dynamic link library Error. If you are installing drivers on a Dell computer, and you get an could not be located in the dynamic link library KERNEL32.dll." ... It indicates that a system file or driver (dll) can not be found or is corrupted.. ... could not be located in the dynamic link library KERNEL32.DLL #202. Open ... I updated on windows 7 error: entry point not found Procedure entry point EncodePointer could not be located in kernel32.dll · windows windows-xp dll service-pack. I get this error when trying to run a program on a "The procedure entry point AddDllDirectory could not be located in the dynamic link library KERNAL32.dll". I get this error no matter which driver I try - chipset, namely "the procedure entry point AddDllDirectory could not be located in the Dynamic link library kernel32.dll" I am running Windows 7 The procedure entry point add dll directory could not be located in the dynamic link library kernel32.dll. I am stuck, cant load drivers or access The Procedure entry point TryAcquireSRWLockExclusive could not be located in the dynamic link library KERNEL32.dll. Please help trying to find out if its an The procedure entry point K32EnumProcessModules could not be located in the dynamic link library KERNEL32.dll. Interestingly it works fine Get the fix for the error KERNEL32.dll not found on Windows XP, Windows ... The KERNEL32.dll file is a 32-bit dynamic link library file used in Windows to ... On Windows 8 this error generates a more generic "Your PC did not start ... where D:\ is your CD's drive letter and C:\ is the letter of the drive you installed Windows to:. procedure entry point setdefaultdlldirectories could not be located kernel32.dll · windows-7 atom-editor. I want to install latest version of Atom (code editor) to my Receive error the procedure entry point k32getprocessmemoryinfo could not be located in the dynamic link library KERNEL32.dll.. Dynamic Link Library files, like kernel32.dll, are essentially a "guide book" that stores ... Cannot find C:\Windows\SysWOW64\kernel32.dll. ... Step 2: If recently installed Microsoft Office Access 2010 (or related software), The Procedure entry point setDefaultDllDirectories could not be located in the dynamic link library KERNEL32.DLL.. The same issue I faced when I freshly installed my window 7 copy on my pc ... starts so that other applications can't use that space to run their operations. ... This is how i fixed dynamic link library kernel32.dll windows 7 error.

The procedure entry point PssCaptureSnapshot could not be located in the dynamic link library KERNEL32.dll. Program was compiled as 32bit The procedure entry point GetErrorMode could not be located in the dynamic link library KERNEL32.dll. Dan Sweeney June 12, 2020 06:04.. Installer Error (The procedure entry point SetDefaultDllDirectories could not be located in the dynamic link library KERNEL32.dll). Help. Long story short. ... it gives the following error "The procedure entry point Addllldirectory could not be located in the dynamic link library KERNEL32.dll".

dee5df5a7f

[baixar filme assunto de meninas 3gp dublado](#)
[The Intern \(English\) Download Torrent](#)
[Easy English Platinum Activation Code \[portable edition\]](#)
[Amy Winehouse Back To Black Deluxe Edition Rar 68](#)
[Paint Tool SAI 1.2.5 Crack Licence Code Full Free Download](#)
[underworld evolution dvdrip ita download torrent](#)
[karma film instrumental ringtone download](#)
[Telugu Movie OMG Oh My God Free Download](#)
[HACK Bluebeam PDF Revu eXtreme 12.5.0 Patch MPT](#)
[the book of soyga download](#)